



British Canoeing Marathon Racing Selection Policy
2022

Jan 2022

CONTENTS & DEFINITIONS

1.	OVERVIEW	3
1.1	International Objectives	3
1.2	Internationals Strategy.....	3
1.3	Selection Committee Composition.....	5
2.	ELIGIBILITY FOR GBR SELECTION 2022	6
2.1	International Eligibility	6
2.2	Age Categories	6
3.	SELECTION POLICY 2022	7
3.1	Selection Process.....	7
3.2	Assessment Race Participation.....	8
3.3	2022 International Programme.....	8
3.4	Contingency	10
3.5	Athlete Availability	10
3.6	Selection Meetings and Announcements	10
4.	GENERAL INFORMATION.....	10
4.1	Mitigating Circumstances	10
4.2	Transport & Logistics.....	11
4.3	Funding and Participation	11
4.4	Paddler agreement	11
4.5	Illness or injury.....	11
4.6	Appeal Procedure	11
4.7	Data Protection.....	12
4.8	Policies	12
4.9	Communications.....	12
	APPENDIX A – British Canoeing Appeals Procedure	13
	APPENDIX B Definitions & examples used in selection process	17

ABBREVIATIONS	
BC	British Canoeing
ECA	European Canoe Association
ICF	International Canoe Federation
MRC	Marathon Racing Committee

1. OVERVIEW

MRC International Selection

The 2022 season continues to present a huge amount of uncertainty, and it is likely that only the most well-resourced international events have a good chance of taking place. The MRC's international objectives detailed below have not changed and we will select teams for all the proposed internationals in the hope that they are able to go ahead as planned.

Due to the French Nationals not taking place in 2021, it has been agreed that this team will be automatically selected for the German Nationals in 2022. This can be seen in the table in section 3.3.

1.1 International Objectives

- a) To win medals at Championship Events, with the greatest importance placed on the pursuit of senior medals.
- b) To pursue long-term athlete development, by:-
 - i) providing opportunities to learn through competing abroad where that experience is harder to achieve domestically;
 - ii) supporting athletes who wish to make reaching their full potential in Marathon a sports career choice; and
 - iii) supporting the transition through age groups into senior classes.
- c) To maximise benefit from the quality and frequency of domestic competition and the ability of clubs and coaches to produce athletes of international quality.

1.2 Internationals Strategy

- a) Relevant Opportunities for Athlete Development

In many classes, the best development opportunities are usually at home. Where the priority in selecting a team is to develop experience, investment in sending teams abroad will be balanced towards classes where a higher level of competition can be guaranteed.

It is important that athletes capabilities are matched to the standard of competition of each class at each international event on the selection calendar. Selection to an event with unsuitable levels of competitions could have a detrimental effect on the athlete's development and is therefore this is not seen as a suitable investment for either the athlete or the MRC. The selection committee will use previous data from the events they are selecting for and an athletes current performance to support their selection decisions.

At under-16 level, athletes are usually progressing in both racing disciplines and busy with schooling. Our aim for these athletes is to introduce them to racing marathon at a more competitive level, with marathon development training days, leading to assessment race participation. For most at this age, the aim would be to participate in assessment races at the National Championships and gain selection to an U16 international team (usually the French Nationals), although early developers may tackle assessment races sooner.

For under 17s, we expect young athletes who are serious about marathon to be participating in the full programme of assessment races. Development team selection opportunities, where possible, will be available for those likely to miss out on major championship selection, where they are showing potential to achieve championship selection the following

season.

For under 18s, the emphasis will be on achieving selection for the major championships, and progressing to a level domestically which will help the athlete progress into the senior classes of the sport.

For under 23s and Seniors, more selection opportunities, where possible, will be available to support the long-term development needed to achieve a career peak in marathon.

The outline opportunities for each age group that we expect to be able to offer in 2022 are as follows:-

	U16s	U17s	U18s	U23s	Seniors
Organised training	Marathon development days Joint activities with Sprint development			National Squad Training Days	
Domestic racing	Hasler calendar, winter races, National Championships and short-course marathon events				
Assessment events	National Championships	All assessment events			
Target internationals for 2022	French Nationals	German Nationals Major Champs	Major Champs	German Nationals World Cup Major Champs	World Cup Major Champs

b) Marathon Development Training

Junior development will be delivered through Racing Skills Days, in partnership between MRC, SRC and the BC Talent Department. A marathon national training squad will be launched in 2022 to support the development of the championship athletes to support their continued development. More will be communicated on this via the MRC Website.

c) Clear evidence from Assessment Races

Where it is not possible to take a full team across all the possible classes, there will be competition across classes for team places. In 2022 we will run a schedule of assessment events intended to highlight and develop the different technical, mental and physical requirements of international competition.

All classes in each assessment event will complete the same lap courses, in order to collect equivalent data for benchmarking (using the Handicap method). Junior/C1 times over shorter courses will be extrapolated up match senior courses.

Data collected from assessment races will be published at the same time as all announcements of selections for international teams. The Handicap scores, along with comparison to international standards, will help athletes and coaches better understand how assessment performances are compared between classes, and how they might translate into potential international performances.

1.3 Selection Committee Composition

- a) The members of the Selection Committee (“the Committee”) are selected by the Marathon Racing Committee (“MRC”). The MRC retains overall authority for all aspects of policy.
- b) The Selection Committee for 2022 will consist of the following members:

Chair: Nanette North (CAM)

Voting Members:

Kat Wilson (RDG)
David Enoch (NOT)
Roland Lawler (ELM)
Dyson Pendle (NOR)
Paul Dimmock (WEY)

Two non-voting, independent representatives:

Fay Lamph (WEY)
Gemma Wiggs (British Canoeing)

- c) Communication with and from the Selection Committee

All communication to and from the Selection Committee should be directed to the Chair, by email to marathon.selectors@vol.britishcanoeing.org.uk. Questions may be asked of individual Committee members, but athletes, parents and coaches should only refer to an official response from the Chair when seeking guidance. Any communications directed to the Chair that cannot be answered by this policy will be discussed with the whole Selection Committee, and a consensus response given.

- d) Conflicts of Interest

British Canoeing is committed to upholding high standards of integrity and as such any person who sits on the Selection Committee shall declare any conflicts or potential conflicts and shall refrain from participation in the discussion of and any vote in respect of any selection matter in which they have a material conflict of interest. If a person is unsure whether they have a conflict or potential conflict they should consult the BC Head of Governance and Compliance.

- e) Selectors are required to make every effort to attend all domestic assessment events, to ensure that a true and accurate assessment of current abilities can be made.
- f) Selection meetings, to decide the composition of international teams, will only be held once a final set of results has been checked and can be properly considered. These meetings may be held face to face or by electronic means.

2. ELIGIBILITY FOR GBR SELECTION 2022

2.1 International Eligibility

Athletes wishing to be considered for International Events must comply with the following conditions:

- a) They must be Comprehensive (“On The Water”) British Canoeing members throughout the year.
- b) They must meet age and nationality criteria for international competition as defined by the Eligibility Policy.
- c) They should be prepared to meet all assembly costs and pay a contribution towards subsistence costs.
- d) They should be prepared to travel and be accommodated in such a way as is considered in the best interests of the overall team.
- e) They must be prepared to accept the Team Manager’s and staff direction with regard to behaviour and racing while abroad.
- f) They must be prepared to dress and conduct themselves in a manner befitting a British Team representative and promote the good name of British canoeing both at home and abroad.
- g) They should wear the GB tracksuit and team clothing provided, on all suitable occasions.
- h) They must sign, and abide by the British Canoeing Code of Conduct.
- i) All athletes must also meet the ICF age criteria specific to the class of race they are seeking selection for.
- j) They must have completed the availability form for the international(s) in question.
- k) They must not be subject to COVID travel restrictions, unless formally exempted on the basis of participation in Elite Competition.

2.2 Age Categories

- a) The first year a junior can compete at World and European Senior/U23/Junior Championships is the year in which his/her 15th birthday falls.
- b) The last year an U23 may compete in international programme events is the year in which his/her 23rd birthday falls.
- c) The last year an U18 may compete in international programme events is the year in which his/her 18th birthday falls.

3. SELECTION POLICY 2022

3.1 Selection Process

- a. The selection of Great Britain teams for all internationals will be made on a fair assessment and open-to-all basis, within the constraints of the Objectives and Strategy.
- b. The German Nationals, is a development trip for U23, U18 & U16 athletes. This team is pre-selected from the team selected for the French Nationals in 2021. Athletes wishing to take their place must race at the long course assessment on the 23rd April 2022. Any places released will be filled by selecting athletes from the same assessment race in April.
- c. The World Cup will be a development trip for Senior & U23 K1 athletes. It is unlikely that athletes who have previously achieved top tier championship results (see appendix B) or are anticipated to be capable of doing so in 2022 based on their performance in the early assessment races, will be selected for this event; unless the selection committee feels the exposure is necessary, for example those with little international experience or in a developing class (see appendix B). This event will be selected from the K1 long course on the 23rd April 2022 and the K1 short course assessments on the 30th April 2022.
- d. For the European Championships, a team will be selected from the top performing athletes in all championship ages and classes. The team size will be subject to the budget constraints and objectives of this policy (see section 3.3). The lead assessment events for this will be the K2 long course assessment on the 11th June 2022 and the K1 assessment on the 18th June 2022. Should it be required, results from the previous K1 assessments will also be referred to. The World Cup will not form part of this selection.
- e. The World Games selection will take place at the same time as the European Championship selections, from the same assessment events (see point 3.1.d). Places will be offered to the highest performing MK1 and WK1 available for the event.
- f. The World Championships team will be selected from the top performing athletes in all championship ages and classes. The lead assessment event will be the National Championships. Results from athletes who attended the European Championships may also be used. If the National Championships cannot be used, an alternative selection event will be run in August. Notice of this will be given as soon as possible.
- g. Results from the National Championships U16 and U14 classes will be used to select a team for the French National Championships 2022. K1 results will be used as the lead selection event, backed up with K2. Where possible high performing K2s will be kept together. In the event this is not possible, K2s will be made up from the best available K1s.
- h. The Sanabria K4 U23 and Senior development team selection is subject to the event taking place and Great Britain receiving an invite. All of the assessment races in April and June will be considered for this selection. However, as the event is a short course, the short course assessments on the 18th June 2022 and 30th April 2022 will be used as the lead events for this selection.
- i. Teams selected will be based on performances benchmarked across classes. An assumed 'world best' time for each assessment event will allow estimated handicap scores to be applied to all performances. These will be compared to handicap scores of winners in the same class at past World Championships, to establish the relative strength of performances across classes at the assessment event. It is acknowledged that comparison across different

ances is not a perfect science, so selectors' informed knowledge and discretion will also be used to ensure these comparisons are fair and result in the best possible team selection.

- j. The selection committee reserves the right to refer to all previous assessment races from the 2022 season as supporting evidence should it be required to help decide between athletes for the final places. This may also be used in the event of Mitigating Circumstances being submitted and accepted (see section 4.1)
- k. If for any reason an assessment event is cancelled, it will be rescheduled if practical. If it cannot be rescheduled the selectors will use results from any completed assessment races in 2022 to inform the selection decisions.
- l. Athletes are encouraged to compete in all the assessment events. This will support competitive racing, continued development and mitigate against any unforeseen circumstances e.g. an assessment event is cancelled and cannot be rescheduled, or an athlete cannot compete in an event at short notice. Due to COVID and the uncertainty of restrictions, this is even more strongly advised.
- m. Individuals' selection to the GB team for each event will depend on:-
 - i. the Objectives and Strategy defining team composition by class;
 - ii. achieving a benchmarked result across classes at the nominated assessment event, that is within the planned team size for the event;
 - iii. meeting the Availability and Eligibility Criteria.
- n. Selection of athletes who fall outside of the above is at the reasonable discretion of the Selection committee in meeting the objectives of this policy.
- o. Athletes will be selected for a lead event. In the event that an athlete has performed well across multiple classes (e.g. K1 & K2 long course) the athlete's preference will be given priority, where possible, and the Selection Committee will define the lead event. Athletes may be selected for additional events if the timing of the events will not compromise the lead event. This is at the discretion of the selectors. Examples of prior selections can be seen in appendix B.
- p. The selectors reserve the right to put a K2 together from two athletes who have been selected in other lead events, assuming the athletes accept and there is room in the relevant class once the team spaces have been filled.

3.2 Assessment Race Participation

- a) All athletes seeking selection for an event must race in the nominated assessment race(s) and class(es) corresponding to the category and team for which they are seeking international selection; unless otherwise instructed by the Chair of the Selection Committee in writing prior to the event. The Selection Committee reserves the right to disregard results gained by athletes racing in the wrong class or not competing at the lead assessment race(s) nominated for the international being selected for.

3.3 2022 International Programme

- a) The team composition by class will be set in accordance to the Objectives, Strategy and resources. Changes may be necessary in the event of changes to the nature of the event, or

to suit factors affecting team size and budgets. All updates will be shared in advance on the MRC website at canoeracing.org.uk/marathon.

- b) Assessment event programme for 2022 (including European Championships which will be used in addition to the National Championships for selection to the World Championships).

Date	Event	Format	Venue
23 rd April	Long course K1	Full distance K1 race	Norwich
30 th April	Short Course National Championships	Heats & Finals	Peterborough
11 th June	Long course K2	Full distance K2 race	Nottingham
18 th June	K1 assessment day	Short course heats and Finals & 20K long course (12k for WJK1 & WC1)	Reading (tbc)
28 – 31 st July	European Championships	International Competition	Sileborg, Denmark
tbc	National Championships	K1 and K2 long course	tbc

- c) International Programme:

Event	Dates	Team Composition	Lead Assessments	Athlete Contribution	Availability Deadline	Team Announcement
German Nationals, tbc, Germany	13 -15 th May	Team selected for French Nationals 2021	K1 Assessment 23 rd April*	£150	16 th April	WC 25 th April
World Cup, Prague, Czech Republic	26 – 29 th May	10 athletes: Senior & U23 only	K1 Assessment 23 rd April Short Course Champs 30 th April	£200	19 th April	WC 3 rd May
World Games, Birmingham, USA	11- 12 th July	2 athletes: K1W and K1M	Short Course Champs 30 th April	£300	13 th June	WC 20 th June
European Championships, Sileborg Denmark	28 -31 st July	Up to 16 athletes	K2 Assessment 11 th June	£200		
Sanabria K4, Sinabria, Spain	tbc	8 senior athletes, 4 female 4 male	K1 Assessment 18 th June	£150		
World Championships, Ponte De Lima, Portugal	29 Sept – 2 Oct	Up to 14 athletes	European Championships Nationals Championships	£200	tbc	tbc
French National Championships, tbc	tbc	Up to 12 athletes, aged under 16	Nationals Championships	£150	tbc	tbc

*Athletes seeking to accept their place must race at this assessment race. In addition if there are spaces released, selections will be made from this race (as per section 3.1.b)

3.4 Contingency

Should a date or venue need to be changed, this will be announced on the MRC website at canoeracing.org.uk/marathon as soon as possible.

3.5 Athlete Availability

- a) Athlete availability must be supplied via the web form on canoeracing.org.uk/marathon, according to the deadlines specified in the Internationals Programme (Section 3.3.c).
- b) Athletes missing a deadline will not be considered and will have no grounds for appeal.
- c) Lists of available, and eligible athletes for each international team will be published on the MRC website before or at the same time as the international selection is announced.
- d) Completion of an availability form by an athlete will be accompanied by a commitment to forfeit their athlete contribution in the case of selection and subsequent withdrawal from the team, except at the discretion of the Selection Committee where mitigating circumstances arise between selection and event.

3.6 Selection Meetings and Announcements

- a) Meetings of the Selection Committee will happen following the final assessment race corresponding to each international event. The announcement of teams for international events will take place within five working days of the corresponding selection meeting, via the MRC website at canoeracing.org.uk/marathon.
- b) British Canoeing reserve the right to withdraw the selection of any athlete found guilty of a disciplinary offence under BC/ICF rules.
- c) Team announcements will include:
 - I. The names of all paddlers selected for the team including the event(s) they will be participating in;
 - II. A copy of assessment event results used, together with calculated Handicap scores
 - III. A note explaining if mitigating circumstances contributed towards a selection.

4. GENERAL INFORMATION

4.1 Mitigating Circumstances

There will be situations where athletes who would normally be expected to earn a team place are prevented from doing so for legitimate reasons. This may include:-

- a. Unavailability for the lead assessment event due to GB Team selection in another canoeing discipline (supported by evidence)
- b. Injury or illness (supported by evidence)
- c. Equipment failure at the assessment.
- d. Non-availability due to COVID travel or association restrictions

Evidence supporting a) b) or d) must be sent in writing to the Chair of the Selection Committee before or within 24 hours of the final assessment event being used for the international event an athlete is seeking selection for.

In such circumstances, the selectors will retain the right to consider previous assessment or international results from the current year. It must be demonstrable based on such evidence, that the athlete in question would, without the mitigating circumstance, have been expected to have comfortably earned a place. Selectors will not be able to choose an athlete who has not raced internationally or raced any assessments in the current season.

Borderline cases will be ruled in favour of athletes who completed the assessment event. The selectors may also disregard evidence of non-availability if they are able to select a team of sufficient strength without the athlete in question. An explanation of any selection made on the basis mitigating circumstances will be included in the notes that accompany the announcement of all international teams.

4.2 Transport & Logistics

All transport and logistics will be organised by the Marathon Racing Committee through the Logistics Manager. The whole team will be expected to travel to and from the event together. Dates of travel will be available on the MRC website and any updates to these travel dates will be published here prior to selection. Athletes will be expected to share rooms as appropriate.

Any questions about logistics must be made through the manager, Graham Warland (Graham.warland@gmail.com).

N.B: Any request to travel independent of the team will be at the discretion of the Logistics Manager. If approved this will be at the cost of the athlete.

4.3 Funding and Participation

All athletes selected to represent the Great Britain Marathon teams will be funded by the Marathon Racing Committee, with a mandatory athlete contribution. Details of the athlete contribution for each event can be found in the International Selection Programme above. The team size for each event is set in line with the Selection Committee's strategy and budget available, but may be reviewed prior to the selection meeting for each international event.

4.4 Paddler agreement

Selected athletes must sign the British Canoeing Great Britain Team participation agreement on accepting selection, no more than two weeks following acceptance of a place onto the team. Paddlers on a BC funded programme will still be bound by the terms of their agreement with British Canoeing.

4.5 Illness or injury

The Selection Committee reserve the right to withdraw athletes from identified race(s) on the basis of injury/illness or lack of commitment to training. Such decisions will only be taken following consultation with appropriate coaches and/or medical reports.

4.6 Appeal Procedure

Please see Appendix 1 for the British Canoeing appeals procedure.

4.7 Data Protection

The MRC has adopted all British Canoeing policies.

British Canoeing is a privacy conscious organisation and is strongly committed to an individual's right to privacy. All data gathered during the selection process will only be utilised for the purposes of an athlete's participation in a Great Britain Marathon Team and squad. This may include administering their event/race entry and certain information may be published as part of the results and rankings of the event/race.

Any personal data will be processed and stored in compliance with the British Canoeing Data Protection Policy and in accordance with all applicable Data Protection laws in effect at the time of publication of this Selection Policy, including but not limited to, the Data Protection Act 2018 and UK GDPR.

Further information on British Canoeing's approach to privacy and data protection, including British Canoeing's privacy notices, policies and contact details, can be located in their Privacy Centre (<https://www.britishcanoeing.org.uk/about/privacy-centre>). Should an athlete wish any data British Canoeing hold relating to them to be deleted at any point; they should contact British Canoeing at GDPR@britishcanoeing.org.uk.

4.8 Policies

For the avoidance of doubt this selection policy operates in conjunction with all relevant British Canoeing policies including but not limited to, Equality Policy, Anti-Doping Policy, Anti Bullying Policy and Anti Bribery Policy.

4.9 Communications

British Canoeing is committed to providing open and informative communication in relation to selection. All athletes will receive formal confirmation of the selection and for those athletes who wish to discuss the outcome of decision made by the Selection Committee the Chair of the Selection Committee will be available to speak informally to athletes, club coaches and in the case of minors, parents.

APPENDIX A – British Canoeing Appeals Procedure

Note 1. Whilst selection decisions are made in good faith, every athlete should feel able to appeal a selection decision. If you're unsure about why a decision has been made, your coach, parent/carer, or another trusted person may be able to give you some guidance. If you believe you have grounds to appeal the decision, this Appeals Procedure sets out what you need to do and what process will be followed.

Note 2. The British Canoeing Head of Governance shall have the power to adjust the timescales within this Appeals Procedure. If timescales are adjusted, this will be communicated to all interested parties at each relevant stage of the appeals process. If you believe the timescales should be adjusted please notify the Head of Governance at the earliest opportunity, and/or communicate this in your written request for review (described in stage 1 below).

Note 3. If, for whatever reason, the Head of Governance is not available, the Chief Executive Officer of British Canoeing or delegate of the Chief Executive Officer will carry out the role of the Head of Governance within this Appeals Procedure.

Note 4. Athletes should ensure that they have provided their preferred method of communication and relevant contact details to the Selection Committee in advance of any selection decisions. If the Athlete is under eighteen (18) years of age current and preferred contact details of their parent or legal guardian should also be provided.

Note 5. If you wish to appeal a decision and would like some guidance, athletes are advised to seek support from their coach, parent/carer or other trusted person to help them navigate the process.

If an Athlete wishes to appeal against a decision taken as part of this Selection Policy then the following two stage process will apply:

1. Stage 1 Review

- 1.1. A written request for a formal review is submitted, in the first instance, by the Athlete or Parent/Guardian to the Selection Committee Chair who will carry out a review in consultation with the Selection Committee.
- 1.2. This request must be submitted within 48 hours (or an earlier date if that has been decided and communicated by the Selection Committee) of the selection being formally announced.
- 1.3. Within 5 working days (or an earlier date if that has been decided and communicated by the Selection Committee) the Selection Committee Chair will advise in writing the outcome of the review and the decision reached.

2. Stage 2 Appeal

- 2.1. If following the formal review the Athlete wishes to formally appeal the decision, then a written Notice of Appeal must be submitted by them to British Canoeing Head of Governance within 5 working days (or an earlier date if that has been decided and communicated by the Head of Governance) of receiving the outcome of the formal review.

3. Notice of Appeal

- 3.1. The Notice of Appeal will set out the grounds of the appeal and will include full details of which ground(s) in 4.1 the appeal is based upon and the precise manner in which the

ground(s) have been met. The Notice of Appeal should be as comprehensive as possible as it will form the basis of the remainder of this procedure.

4. Grounds of Appeal

- 4.1. An Athlete shall be entitled to appeal on any (either individually or cumulative) of the following grounds:
 - a) The decision was not in accordance with the Selection Policy as published;
 - b) The policy has been misapplied or applied on no good evidence and/or in circumstances where the application of the policy was unfair;
 - c) The decision maker has not declared a conflict and/or has shown bias or the selection has otherwise been demonstrably unfair; and/or
 - d) Where the conclusion is one that no reasonable decision maker could have reached.
- 4.2. In setting out which of the grounds at 4.1 the Athlete appeals on, the Athlete may include a response to the outcome of the Stage 1 Review.
- 4.3. In order to ensure a timely and efficient appeals process only the grounds of appeal detailed in 4.1 will be permitted. The composition of the Selection Committee is not open to appeal unless 4.1 (c) is being cited in The Notice of Appeal.

5. Appeal Panel

- 5.1. The Head of Governance and Compliance will convene a three person Appeal Panel as soon as is practicable to determine the appeal made up of suitably independent and experienced members who have not been involved in the Selection process so far. The Athlete will be given the opportunity to challenge the composition of the Appeal Panel.
- 5.2. The Head of Governance shall contact the Selection Committee to inform them of the Appeal, provide them with a copy of the Notice of Appeal and request that they provide any additional information they wish the Appeal Panel to consider within 48 hours of receiving the Notice of Appeal.
- 5.3. The Appeal Panel will ordinarily determine the appeal based on the written submissions of the Athlete and the Selection Committee without a hearing or the calling of witnesses or the giving of oral evidence. However the Appeal Panel will have the power to set its own processes and give directions including but not limited to, requesting further information, setting up a teleconference, determining if a hearing is required and if it is, establishing the date, time and place, and format to be followed in such a hearing.
- 5.4. The Appeal Panel will seek to reach its conclusion within 5 working days (or an earlier date if that has been decided and communicated by the Head of Governance) of its appointment in accordance with 5.1, and will inform all interested parties in writing.
- 5.5. The Appeal Panel shall be entitled to;
 - a) Rescind the Selection decision and confirm the selection of the Athlete in circumstances where it is clear that the grounds of the Appeal have been upheld.
 - b) Confirm the selection decision and reject the Appeal.
 - c) Quash the Selection decision and remit the matter back to the Selection Committee identifying the errors they have found in the conduct of the Selection process and

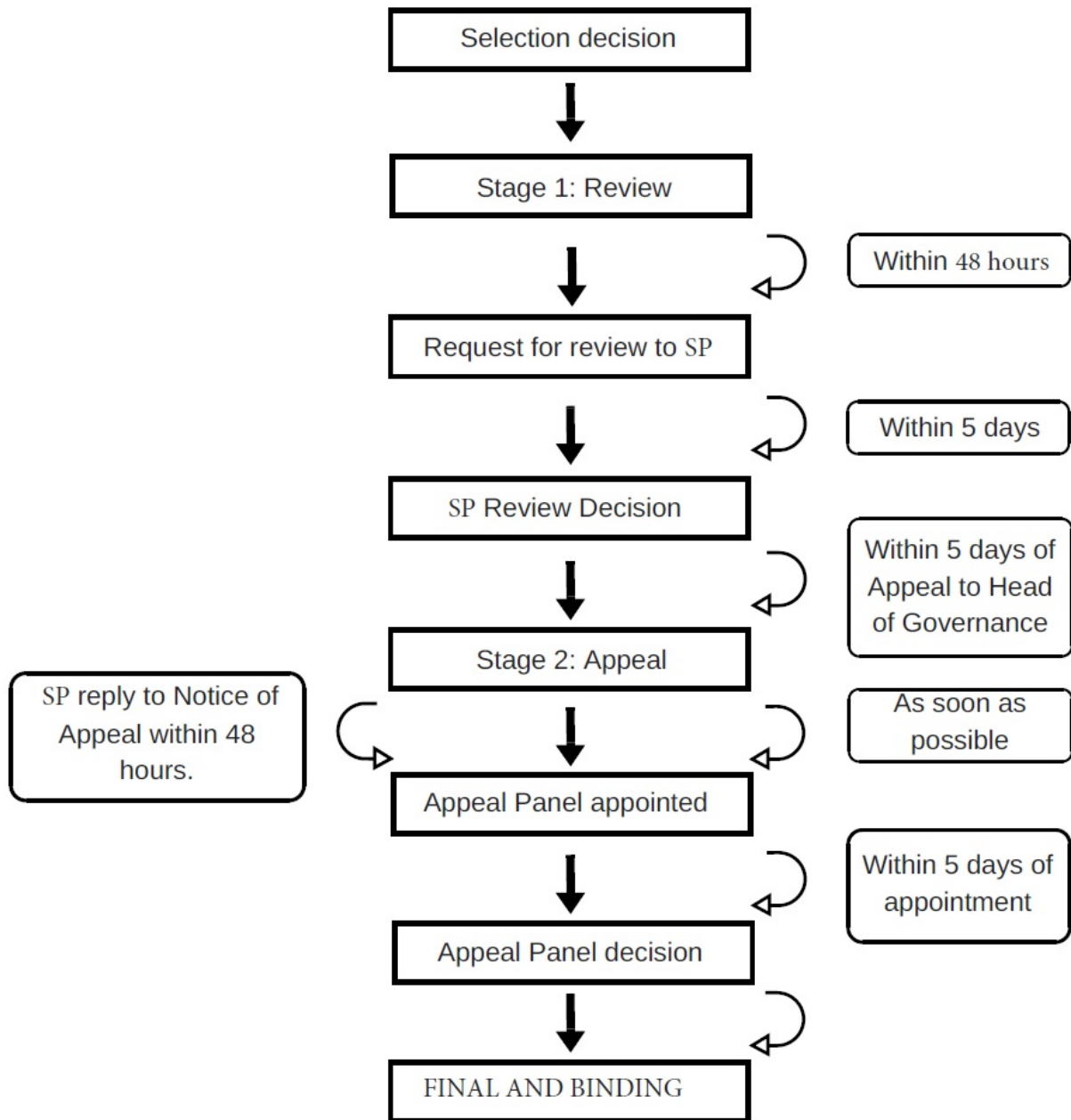
requesting that a new decision is made within one week (or an earlier date if that has been decided and communicated by the Head of Governance).

6. Final and Binding

- 6.1. This is an accelerated process to enable any challenge to be resolved as quickly as is reasonably possible.
- 6.2. The aim of this process is to return a decision on appeal in a timely manner. If the athlete fails to adhere to the time limits set out in this process he or she will have lost their right of appeal under this procedure, save in wholly exceptional circumstances which will be judged by the Chief Executive Officer of British Canoeing in their absolute discretion.
- 6.3. Further this it is intended to be conclusive and therefore any athlete who enters into this appeal process accepts that the decision will be final and binding.
- 6.4. Each appeal will be considered on its own merits.

7. Confidentiality of Proceedings and Publication of Decision

- 7.1. Unless the parties mutually agree to waive the right, both parties are under an obligation of confidentiality in respect of any appeal process except for reasonable disclosure to family members and/or a trusted advisor in the case of Athletes. Save as permitted under this Appeals process none of these parties will make any public statement or disclosure of the contents of any correspondence by any of the parties during the course of this process.
- 7.2. British Canoeing shall be entitled to publish the outcome of the Appeal in such manner and to such extent as is necessary to inform all properly interested and affected parties of the status of the selection decision previously published and the resulting implications upon selection.



*nb "SP" means Selection Committee.

APPENDIX B Definitions & examples used in selection process

Top Tier Result: this is subject to change year on year and will be determined by the Selection Committee at the time of selection using previous and current year international data. For example in 2021 it reflected top 10 in a developed class such as MK1 or top 5 in a developing class such as WC1.

Development Class: this is a class where the class is under-represented by nations and does not have a depth of competition that reflects classes such as MK1. Examples of developing classes selected for in 2021 were JWK2 and WC1.

Examples of where doubling up has occurred in recent years:

Athlete	Lead Selection	Doubled Up	Year
Dan Johnson	MK2 Snr	MK1 Snr Short	2021
Anoushka Freeman	WK1 U23	WK2	2021
James Russell	MK1 Short	MK1	2021
Rebecca Solway	WK1 U23	WK2	2021
Arthur Leech	MC1	MC1 short	2021
Beth Gill	WC1	WC1 short	2021